

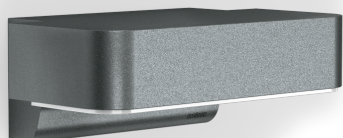
Sensor-switched outdoor light

L 800 LS

V2 Anthracite

EAN 4007841 035747

Article number 035747



Downlight L 825

LED

30 years (Ø 4,5h / day)

3000 K

3000K warm-white



intelligent high frequency sensor 160°



1 - 5 m



IP44



2 - 1000 lux



5 sec - 15 min



soft light start



manual override 4h

Function description

The most modern outdoor light in the world. Designer sensor-switched outdoor light L 800 S with invisible high-frequency sensor, ideal for building entrances and fronts of buildings, 7,5 W STEINEL LED lighting system, , 160° coverage angle, reach from 1 - 5 m, for stylish downlighting, includes soft light start and optional manual override for 4 hours.

L 800 LS

V2 Anthracite

EAN 4007841 035747

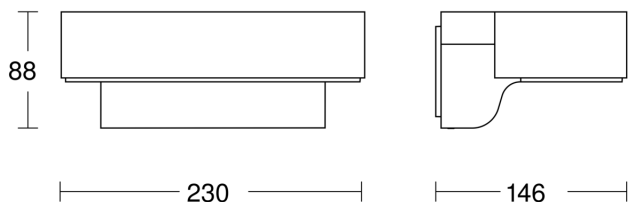
Article number 035747

Technical specifications

Dimensions (L x W x H)	145 x 230 x 88 mm
Mains power supply	220 – 240 V / 50 – 60 Hz
Mounting height max.	2,50 m
Sensor Technology	iHF (intelligent high-frequency technology)
Transmitter power	
Output	7,5 W
Interconnection	No
Slave modeselectable	Yes
Colour temperature	3000 K
With lamp	Yes, LED lamp
Lamp	LED cannot be replaced
LED life expectancy (25 °C)	> 60000 h
Base	without
LED cooling system	Active and Passive Thermo Control
With motion detector	Yes
Detection angle	160 °
Sneak-by guard	Yes
Capability of masking out individual segments	No
Electronic scalability	Yes
Mechanical scalability	No
Reach, radial	r = 5 m (35 m ²)

Reach, tangential	r = 5 m (35 m ²)
Photo-cell controller	Yes
Twilight setting	2 – 2000 lx
Time setting	5 s – 15 Min.
Basic light level function	Yes
Basic light level function time	10/30 min, all night
Functions	Motions sensor
Soft light start	Yes
Continuous light	selectable, 4h
Impact resistance	IK03
IP-rating	IP44
Protection class	II
Ambient temperature	-20 – 40 °C
Housing material	Aluminium
Cover material	Plastic, opal
Manufacturer's Warranty	3 years
includes sheet of self-adhesive numbers	No
Settings via	Potentiometers
With remote control	No
Version	Anthracite
PU1, EAN	4007841035747

Dimension Drawing



Circuit diagram

