

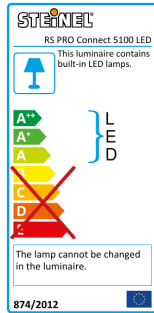
Sensor-switched LED indoor light - Professional Line

RS PRO Connect 5100 LED

Sensor

EAN 4007841 052911

Article number 052911



LED

36 years (Ø 4,5h / day)

4000 K

4000K neutral white



high frequency sensor 360°



max. Ø 10 m



2 - 2000 lux



5 sec - 60 min



shock proof IK07



connectable via bluetooth

5 years

manufacturer's warranty
steinel-professional.de/garantie



Function description

New diffuser luminaire. New options. The sensor-switched LED diffuser luminaire is sturdy, practical, easy to install, interconnectable via Bluetooth, conveniently set by smartphone, extremely energy-efficient and no problem whatsoever to service. Ideal for refurbishment in multi-storey car parks, basements, industrial and sports buildings, garages and corridors. 360° high-frequency sensor, 10 m reach. With 4206 lm from 30 W in a colour temperature of 4000 K (neutral white). Presence mode rules out any unintentional deactivation.

RS PRO Connect 5100 LED

Sensor

EAN 4007841 052911

Article number 052911



Technical specifications

Dimensions (L x W x H)	58 x 1370 x 87 mm
Mains power supply	220 – 240 V / 50 – 60 Hz
Sensor Technology	High frequency
Transmitter power	
HF-system	5,8 GHz
Output	30 W
Power consumption	0,4 W
Interconnection	Yes
Type of interconnection	Master/master, Master/slave
Interconnection via	Bluetooth
Luminous flux	4206 lm
Colour temperature	4000 K
Colour variation LED	SDCM3
Farbwiedergabeindex	80-89
With lamp	Yes, STEINEL LED system
Lamp	LED cannot be replaced
LED life expectancy (max. °C)	60000 h
Drop in luminous flux in accordance with LM80	L80B10
Base	without
LED cooling system	Passive Thermo Control
With motion detector	Yes
Detection	also through glass, wood and stud walls
Detection angle	360 °
Angle of aperture	160 °
Capability of masking out individual segments	Yes

Electronic scalability	Yes
Mechanical scalability	No
Reach, radial	Ø 10 m (79 m ²)
Reach, tangential	Ø 10 m (79 m ²)
Continuous light	selectable
Photo-cell controller	Yes
Twilight setting	2 – 2000 lx
Time setting	5 s – 60 Min.
Basic light level function	Yes
Basic light level function time	10-30 min, all night
Main light adjustable	50 - 100 %
Functions	Group parameterisation, Manual ON / ON-OFF, Master/slave override, Neighbouring-group function, Presence function
Soft light start	No
Impact resistance	IK07
IP-rating	IP66
Protection class	II
Ambient temperature	-20 – 40 °C
Housing material	Plastic
Cover material	Plastic, structured
Manufacturer's Warranty	5 years
Settings via	Bluetooth
With remote control	No
Installation site	wall, ceiling
Version	Sensor
PU1, EAN	4007841052911

Sensor-switched LED indoor light - Professional Line

RS PRO Connect 5100 LED

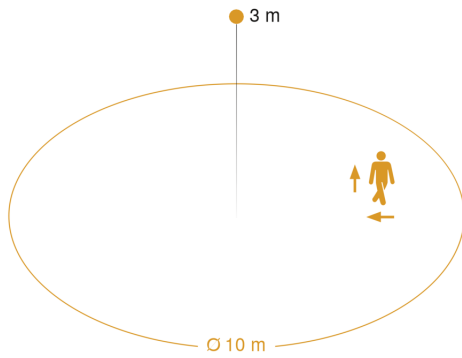
Sensor

EAN 4007841 052911

Article number 052911



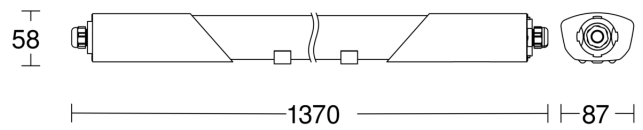
Detection Zone



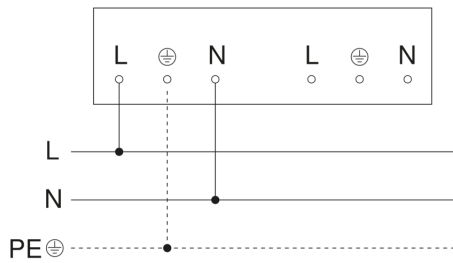
Mögliche Montagehöhe: 2,00 m – 3,50 m

Orange: radial und tangential

Dimension Drawing



Master circuit diagram



RS PRO Connect 5100 LED

Sensor

EAN 4007841 052911

Article number 052911

Master/slave and master/master interconnection circuit diagram

